

1 DESCRIPTION

The TKF-Chain connectors have to be used for connecting roundsteel-, flat- and special chains in mining-conveyors. They may be used in horizontal or vertical installation.

The TKF-Chain connectors consist of two symmetrical forged halves. These would be combined by an oval cotter pin and locked against unintended opening by a split pin.

The TKF-chain connectors comply with DIN 22258-1 and are optionally galvanised against corrosion.

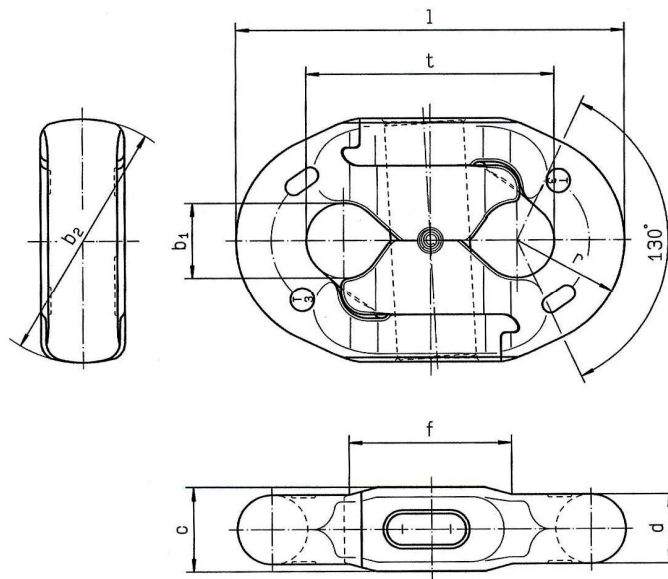
The halves are manufactured as a tuned couple and should only be used together.

The split pin only has to be used for one time.



Picture 1: TKF-Chain connector

2 TECHNICAL DATA



Chain size d x t [mm]	Article no.		b ₁ min [mm]	b ₂ max [mm]	c max [mm]	f max [mm]	l max [mm]	r [mm]	Proof-force [kN]	Breaking force ¹⁾ [kN]	Operating Force max [kN]	Mass [kg]
	nsw	galvanised										
30 x 108	F26060	F26061	32	113	36,6	72	170	46	848	848	707	2,9
34 x 126	F26070	F26071	36	125	41	82	196	52	1 090	1 090	907	4,3
38 x 137	F26080	F26081	41	138	46	91	216	59	1 360	1 360	1 130	6,0

1) in condition nsw (surface after tempering)

3 ASSEMBLY

1. Open the connector by removing the split pin and the oval cotter pin. Move the halves to open.
2. Check that all parts are on hand.
3. Stop the conveyor and make sure, that it will not start unintended.
4. Move and turn the halves inside the chain ends as shown in picture 2 and assemble the halves together.
5. Move the cotter pin into the halves and lock the connector by the split pin (Picture 3). Take care, that the split pin does not overlap.
6. Remove all tools and disruptive parts outside the conveyor, before switching-on it again.



Picture 2



Picture 3

4 DISASSEMBLY

1. Stop the conveyor and make sure, that it will not start unintended.
2. Untension the chain.
3. Remove the split pin and the cotter pin by a punch. The groove at the front side of the oval cotter pin should make sure, that the bit of a pneumatic hammer does not slip off.
4. Disassemble the halves by using a hammer.

5 SPARE PARTS

Chain size	Designation	Article no.
30 x 108	Split pin DIN 7343 10x36	Z00150
34 x 126	Split pin DIN 7343 10x40	Z00287
38 x 137	Split pin DIN 7343 12x45	Z00288

6 WEAR

The TKF-Connectors have to be changed, when the pitch exceeds 3 % or there is important damage and wear.

7 ENVIRONMENT

Dispose of discarded steel components and accessories for scrapping in accordance with local regulations. Dispose of packaging in accordance with local regulations.

8 STORAGE

Store connectors in dry locations at temperatures ranging between 0 °C and +40 °C.

9 THIELE BETRIEBS- UND MONTAGEANLEITUNGEN

Current operating and mounting instructions are available as a PDF download on the THIELE homepage.



10 IMPRINT

THIELE GmbH & Co. KG
Werkstrasse 3
58640 Iserlohn
Germany
Tel.: +49 (0) 2371 / 947 - 0

Due to more major changes, individual ones are not marked.